

# EASY INSTALL GUIDE: M5/UPS

## 1 Unpack & Open Up the Metron5

Place unit on a flat surface and loosen the 2 nylon screws in the bottom corners of the Metron5 and 6 screws around the UPS enclosure to open.

*Allen key required.*



## 2 Find a Suitable Place to Mount the Unit

Ideally a flat surface such as a wall/ DIN railing/ Unistrut railing.

Avoid mounting inside metal cabinets or underground (could reduce signal).

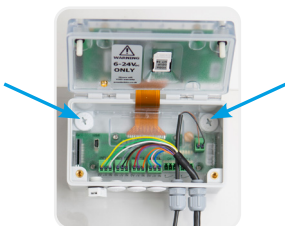
We supply a 2m cable to connect the UPS to the Metron5. It is OK to trim to suit the installation.



## 3 Mount the Metron5 & UPS

Use pre-drilled mounting holes to fix UPS and Metron5 to flat surface. Leave space between for inputs.

Fit appropriate M12 glands and ensure blanking plugs are fitted over unused glands.



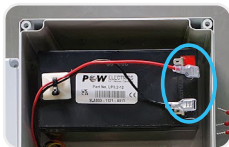
## 4 Connect the Battery

Remove the white plastic cover from the battery terminals (lower box).

Use the black and red wires from the UPS (upper) and slide on to connect to the battery terminals.

Maintain polarity:

**Black to black (-). Red to red (+).**



## 5 Connect to Mains

Connect supplied SY cable (5m) to a source of 110/230 V ac.

Provide fused spur.

Blue: Neutral

Brown: Live

Green/Yellow: Earth



# EASY INSTALL GUIDE: M5/UPS

## 6 Connect the Sensor(s)

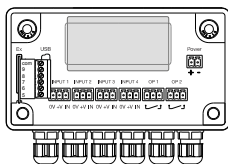
Run the sensor cable(s) through the lower unit's glands.

Unplug the green connector(s) and wire in as required.

Plug the connector(s) back into the correct input channel and tighten the gland. Ensure cable is through the gland.

Reattach all lids and take care to tighten screws to ensure waterproof IP67 rating is maintained.

Do not overtighten the screws or glands so as to cause damage.



0-10 Volt DC 3 wire sensor



4-20mA 2 wire sensor that requires power



Volt free contacts

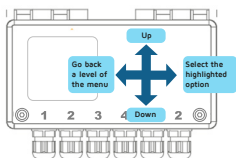


## 7 Navigate the Metron5

Press any button to wake the Metron5. Press left to cycle channels for immediate reading (config. dependent) or enter PIN (1234) and press right after 4th digit to enter homepage.

Move down to Force Transmit and right to select. Watch the progress bar and wait for the unit to transmit. Once complete, data can be viewed on MetronView. The unit will countdown for 45 seconds, then enter Run Mode. Screen will turn off.

For live channel readings, channels can be selected from the menu by pressing right on Channels and Read Now.

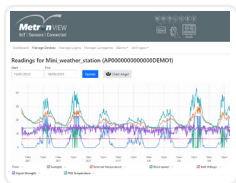


## 8 View Data

Visit: [2020.metronview.com](http://2020.metronview.com)

Login credentials will have been sent by email.

Once logged in, a summary of the units will be visible. Click view to the left of the device's name to see the historical data.



## 9 Programming

Units can be remotely programmed from MetronView. It is possible to change how often readings are taken & sent, alter scaling and alarm thresholds for each input channel and much more.

To make changes contact PowTechnology support.

The configuration will be held on the server and downloaded to the device when it next communicates.

Select 'Force transmit' rather than waiting for the next time the device transmits in order to reconfigure sooner.